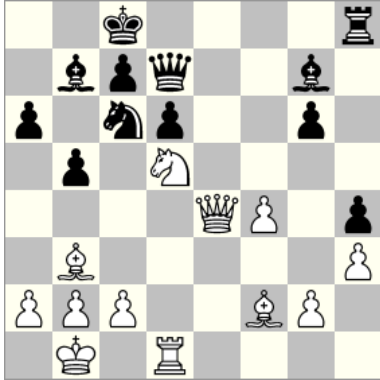




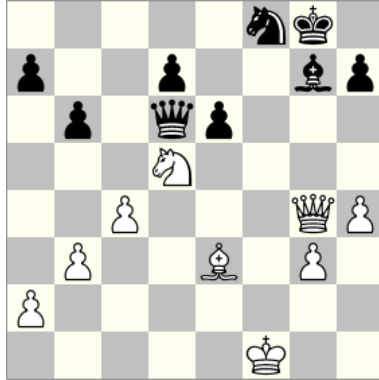
Fork

Name _____ Date _____

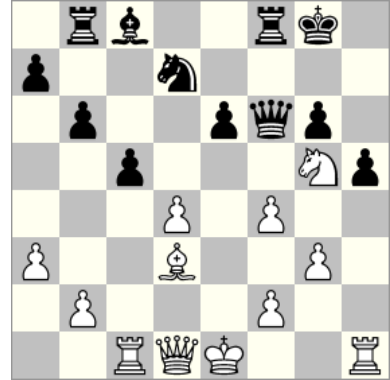
(1) 17426000



(2) 17390000



(3) 17412000



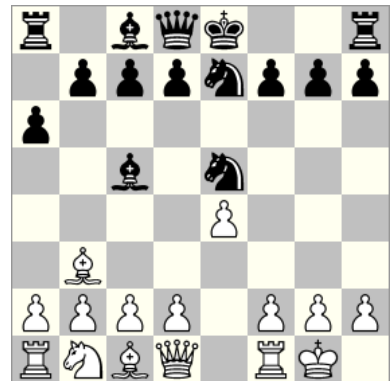
(4) 17418000



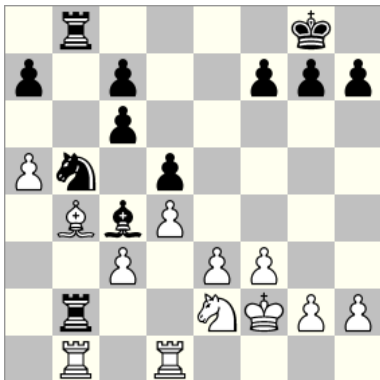
(5) 28060000 - Gabel & einfach



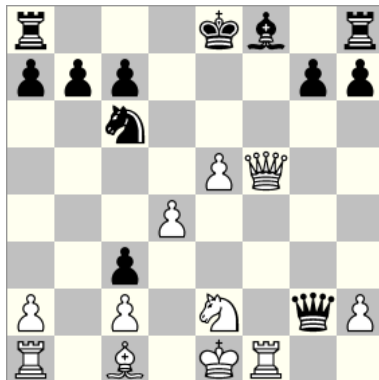
(6) 28063000 - Gabel & einfach



(7) 17391000



(8) 17395000



(9) 17408000





Answers

1. 17426000 →

<https://edugnosis.com/lessons/index.php?cnt=4&posid=17426000>

1. Nb6+ cxb6 2. Be6 *



2. 17390000 →

<https://edugnosis.com/lessons/index.php?cnt=4&posid=17390000>

1. Nf6+ Kf7 2. Qxg7+ Kxg7 3. Ne8+ *



3. 17412000 →

<https://edugnosis.com/lessons/index.php?cnt=4&posid=17412000>

1. Nh7 *



4. 17418000 →

<https://edugnosis.com/lessons/index.php?cnt=4&posid=17418000>

1. Nxf6+ gxf6 2. Rxd4+ *



5. 28060000 →

<https://edugnosis.com/lessons/index.php?cnt=4&posid=28060000>

1. Qe4 1-0



6. 28063000 →

<https://edugnosis.com/lessons/index.php?cnt=4&posid=28063000>

1. d4 1-0



7. 17391000 →

<https://edugnosis.com/lessons/index.php?cnt=4&posid=17391000>

1... Nxc3 2. Bxc3 *



8. 17395000 →

<https://edugnosis.com/lessons/index.php?cnt=4&posid=17395000>

1... Qxe2+ 2. Kxe2 Nxd4+ 3. Kd3 *



9. 17408000 →

<https://edugnosis.com/lessons/index.php?cnt=4&posid=17408000>

1... Qxc6 2. Nxc6 Ne2+ 3. Kf1 Nxc3+ *

